



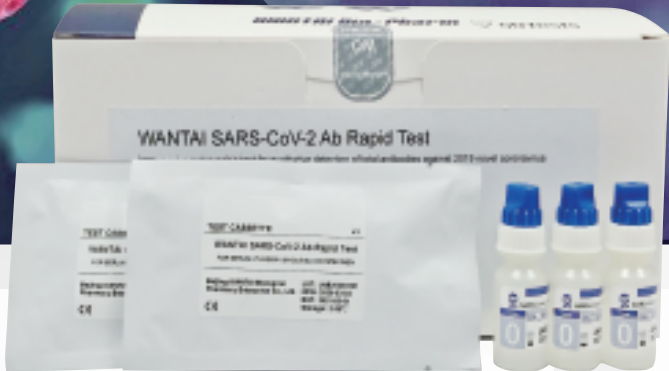
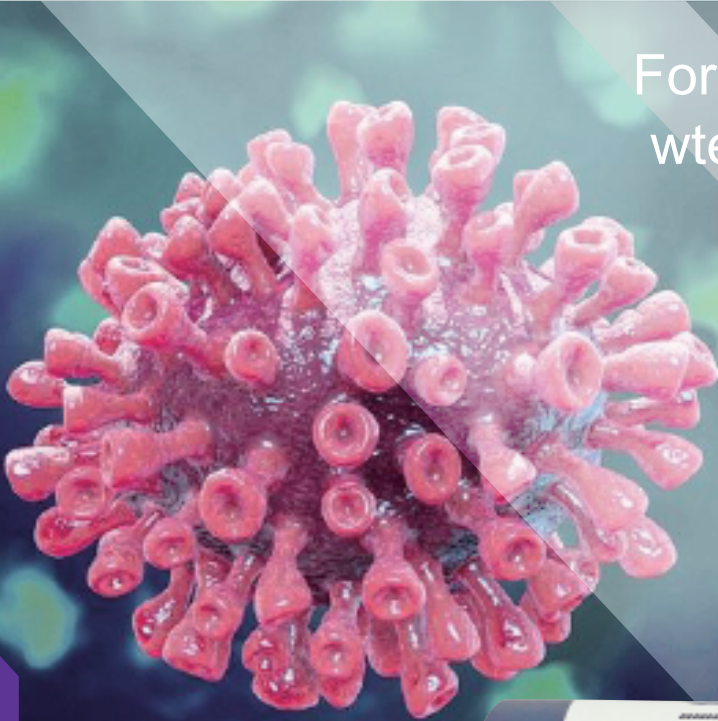
# Diagnostic Kits for SARS-CoV-2 Virus (COVID-19)

- \* Total Ab ELISA 
- \* IgM ELISA 
- \* Total Ab Rapid test 
- \* RT-PCR 

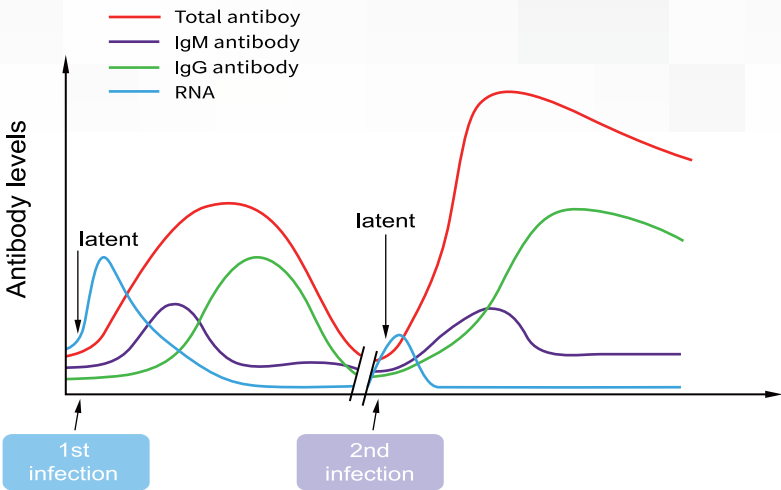
For more information:  
wtexport@ystwt.com



WANTAI



## Serological and virolocal markers of COVID-19

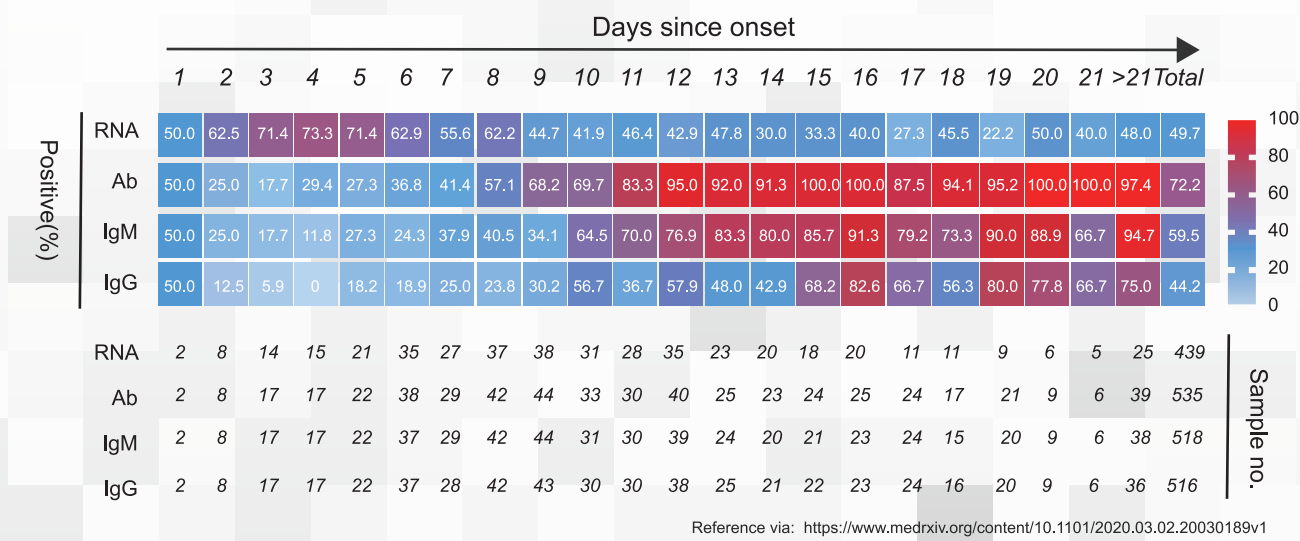


Antibody dynamics during COVID-19 infection

Along with the spreading global pandemic of Novel Coronavirus, countries around the world are struggling to diagnose and control this disease in time. Considering this current situation, **Xiamen University & Wantai** has jointly developed a series of innovative assays, which are highly sensitive and specific serological and molecular markers for the screening and confirmation of **COVID-19**.

**Wantai offers total laboratory solution for COVID-19 diagnosis with results in 75 minutes.**

## Clinical importance of combined RNA and antibody testing



- COVID-19 serological markers dynamics (Total Ab/ IgM/ IgG):**
  - 20%-40% of the patients developed antibodies **on days 0-7** after onset
  - 60%~70% of the patients developed antibodies **on days 8-11** after onset
  - > 90% of the patients had detectable levels of antibodies **starting from day 12** after onset.
- COVID-19 molecular markers dynamics (RNA):**
  - RNA was detected in **60-75%** of the patients on days 0-8 after onset
  - RNA levels decrease to **40-50%** **starting from day 9** after onset
- COVID-19** combined serological and molecular markers increases the sensitivity of diagnosis while maintaining the high specificity. **Among the serological markers, total Ab detection has greater significance in clinical practice.**

## Sensitivity and Specificity of Wantai Diagnostics

Clinical Data	Product	Sensitivity	Specificity
WANTAI SARS-CoV-2 Diagnostic kits	<b>Ab ELISA</b> (WS-1096)	94.36% (251/266)	100% (306/306)
	<b>IgM ELISA</b> (WS-1196)	86.09% (229/266)	99.35% (304/306)
	<b>Ab RDT</b> (WJ-2750)	94.70% (125/132)	98.89% (268/271)
	<b>RT-PCR</b> (WS-1248)	93.30% (181/194)	100% (118/118)
Data from The Third People's Hospital of Shenzhen, The First Affiliated Hospital, Zhejiang University; Academy of Military Medical Sciences; Kunming Third People's Hospital, China.			

## Ordering Info

Cat.	Product	Detection	Specimen	Pack size	Time to result
WS-1096	SARS-CoV-2 Ab ELISA	Total Ab (IgM+IgG)	Serum/Plasma	96T/kit	75 min
WS-1196	SARS-CoV-2 IgM ELISA	IgM Ab	Serum/Plasma	96T/kit	75 min
WS-1248	SARS-CoV-2 RT-PCR	RNA	Nasopharyngeal or Oropharyngeal swabs	48T/kit	75 min
WJ-2750	SARS-CoV-2 Ab Rapid Test	Total Ab (IgM+IgG)	Serum/Plasma/Whole blood	50T/kit	15 min

Beijing WANTAI Biological Pharmacy Enterprise Co., Ltd.