



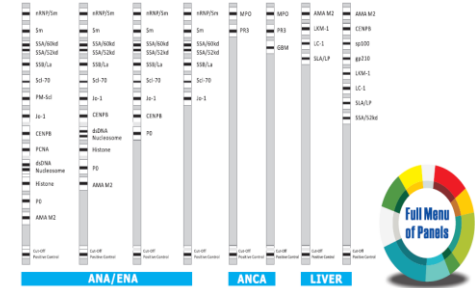
HOB

**Your Preferred Partner For
Allergy & Autoimmune Products**

Healthcare On Biotechnology

- Line ImmunoAssay

- BioCLIA



HOB Autoimmune Business

- Top tier player in Autoimmune Diagnostics.
- Strong R&D capability. 53 parameters continuous development .
- ISO 13485 certified facility.
- Competitive price.
- The most comprehensive Autoimmune menu.

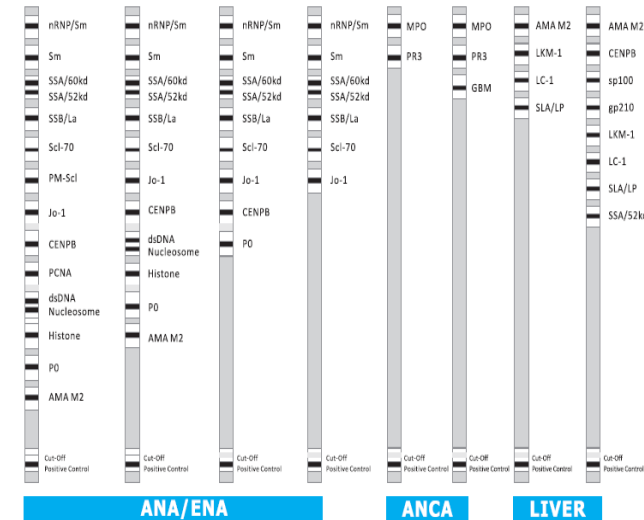


Line Immuno Assay (LIA) for Detection of Auto-antibodies

Features & Advantages

- Up to 23 auto-antibodies
- Cut-off Line for Easy Interpretation
- Built-in Function Control for Handling and Reagent Quality Validation
- Software for Interpretation Available
- Automated Operation Available
- Cost Effectiveness

ANA/ANCA/LIVER



Multi-centers clinical study

Clinical comparison between two ANA commercial kits

Antigen	Test results(EUROIMMUN/HOB)				T/C	P/C	N/C
	+/+	+/ -	- / +	- / -			
nRNP/Sm	92	4	3	671	99.1%	92.9%	99.4%
Sm	24	3	6	737	98.8%	80.0%	99.6%
SSA	275	14	17	464	96.0%	94.2%	97.1%
Ro-52	173	5	11	471	97.6%	94.0%	98.9%
SSB	90	0	16	664	97.9%	84.9%	100.0%
Scl-70	15	5	5	745	98.7%	75.0%	99.3%
PM-Scl	4	0	0	326	100.0%	100.0%	100.0%
Jo-1	10	4	1	755	99.4%	90.9%	99.5%
CENP-B	80	2	1	687	99.6%	98.8%	99.7%
PCNA	2	1	0	327	99.7%	NV	99.7%
ds-DNA	65	3	29	673	95.8%	69.1%	99.6%
Nuc	41	5	19	705	96.9%	68.3%	99.3%
His	59	25	10	676	95.5%	85.5%	96.4%
P0	66	2	4	698	99.2%	94.3%	99.7%
AMA-M2	31	1	4	294	98.5%	88.6%	99.7%

HOB advantage over Euroimmune

- Blocking buffer for a clearer background —BSA.
- High interchangeability between different panels— identical liquid component and incubation time.

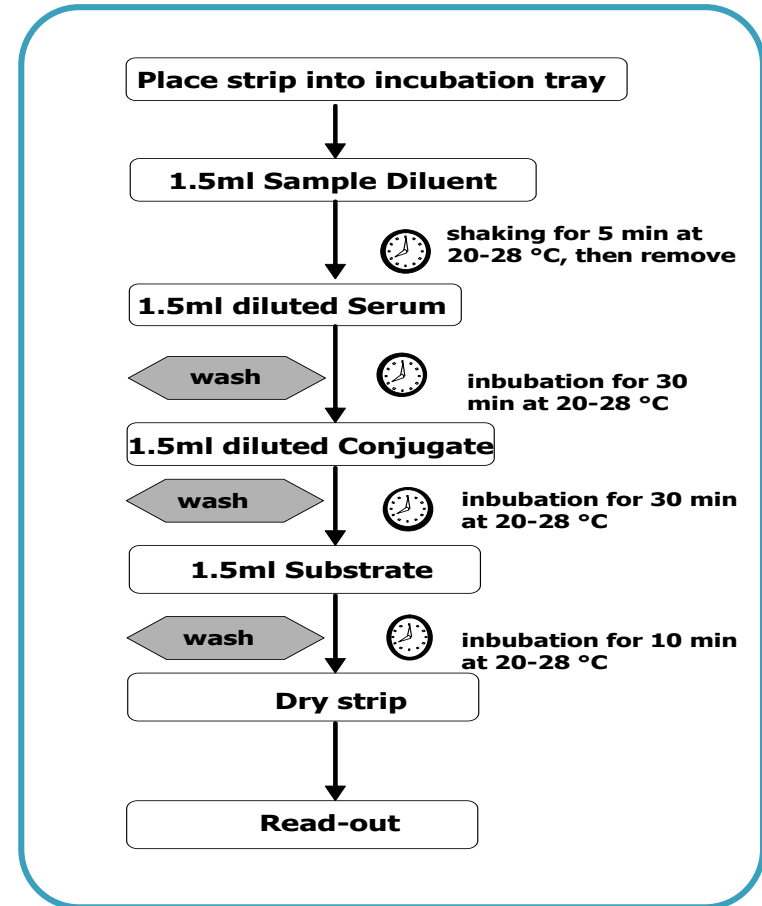
Result Interpretation

- Negative- No band or a lower intensity compared to the cut-off line.
- Equivocal- No obvious differences, shown as (+).
- Positive- A stronger intensity is obtained.

Assay Procedure

Reagent Preparation

- Wash Buffer (1:9)
- Conjugate Solution (1:10)



Autoimmune Total Solution



- Easy Operation
- Easy Interpretation
- Easy Training & Maintenance
- Compatible with All HOB Line Products

HOB Line Machine

Advantages

- Best Partner for HOB Line Software
- 40 Strips per Run
- User-friendly Interface
- Programmable Operation System
- Space Friendly
- Minimal Hands-on Time
- Convenient for Installation, Operation and Daily Maintenance



HOB Line Software

- Best partner for HOB Line Machine
- Score multiple panels simultaneously
- Multi lingual software
- Batch increase samples and data management

Report

Panel-3					
Patient Name	Jeff	Gender		Age	Patient ID
Sample ID	1	Sample Type		Sample Received	2015-10-27
Department		Physician		Test Item	Panel-3
ALL-3-1-15					
Allergen	Intensity	Class	Interpretation		
F1	2	0	None or hardly any found (gE)		
F75	2	0	None or hardly any found (gE)		
F2	0	0	None or hardly any found (gE)		
F78	2	0	None or hardly any found (gE)		
F3	0	0	None or hardly any found (gE)		
F23	0	0	None or hardly any found (gE)		
F5	2	0	None or hardly any found (gE)		
F4	3	2	None or hardly any found (gE)		
F13	13	2	Increased		
F14	111	0	Extremely High		
F20	23	3	Significantly Increased		
F25	114	4	Extremely High		
F25	1	0	None or hardly any found (gE)		
F85	0	0	None or hardly any found (gE)		
F31	3	0	None or hardly any found (gE)		
F36	3	0	None or hardly any found (gE)		
F17	1	0	None or hardly any found (gE)		
F10	0	0	None or hardly any found (gE)		
F95	0.8	4	High		
F49	0.8	5	Very High		
CCD	15	2	Increased		



- Intelligent identification and quantitation of bands
- Option to modify results manually
- Electronic archiving of all images and data
- Operating System: Windows XP, Windows 7, Windows 8

BioCLIA- Fully automated, random access solution



BioCLIA Menu (Phase I ready)



- Any Sample
- Any Time
- Any Test
- Precise Determination

ANA menu (15)		Vasculitis (3)	Liver (5)
RNP/Sm	PCNA	MPO	gp210
Sm	PM-Scl	PR3	sp100
SSA	dsDNA	GBM	LKM-1
Ro52	Histone		LC-1
SSB	Nucleosome		SLA/LP
Scl-70	AMA-M2		
Jo-1	Cenp-B		
Rib-P			

BioCLIA Menu (Phase II & III)

APS	RA	DM-1	Thyroid	Celiac Diseases	Other
Cardiolipin A Cardiolipin M Cardiolipin G Cardiolipin P β-2 glycoprotein I A β-2 glycoprotein I M β-2 glycoprotein I G β-2 glycoprotein I P	RF-A RF-M RF-G RF-P CCP RA33	GAD ICA IAA IA2	Anti-TPO Anti-TG	htTg IgA htTg IgG DPG IgA DPG IgG	LKM1 LC1 SLA/LP SP100 GP210 M2 PCA IF PML

www.hob-biotech.com



THANK YOU

Headquarters in Suzhou, China



**Address: C10Building, 218 Xinghu Rd., Suzhou
215123,China**

Telephone: +86 (512) 6956 1996

Fax: +86 (512) 6295 6652

Email: hob@hob-biotech.com